



NEWSLETTER NO. 1, MAY 2016

Civic Trust Auckland
P O Box 74 049 Greenlane 1546
cta@civictrustauckland.org.nz
www.civictrustauckland.org.nz

Patron: Hamish Keith

This is the first newsletter for 2016 and has been compiled by Audrey, with contributions from Helen and Sean, and photos from Roy, Helen, Sean and Allan.

Garden Party

It was a perfect afternoon for the Civic Trust Auckland garden party at Kinder House on 13 March. Aside from enjoying the music provided by flutes and madrigal singers - pictured below - the delicious food from our caterers (the Women's International League for Peace and Freedom) kept on coming, the garden bar was well patronised, there was conversation a-plenty, and further entertainment was provided by Oliver doing a spot of gardening. Thank you, Margaret, for inspiring us to repeat this popular event. More images at <http://civictrustauckland.org.nz/perfect-garden-party-afternoon/>



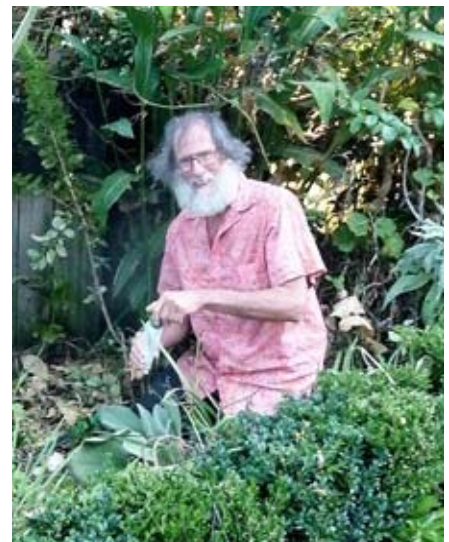
Board Members 2016

Allan Matson (president)
Audrey van Ryn
(vice-president & secretary)
Julian Mitchell (treasurer)
Margaret Barriball
Helen Geary
Munroe Graham

Keep an eye on the CTA website for news and notices:
<http://civictrustauckland.org.nz/>



photos - Roy Clements



Meeting with Phil Goff



l-r: Helen, Phil, Audrey & Allan at Phil's office

Helen organised a meeting on April 26 with mayoral candidate Phil Goff, for Board members to present CTA's perspective on matters of heritage, including our concern that Auckland Council has not adequately assessed or protected the city's heritage.

We also voiced our concern about whether the Unitary Plan will be an effective tool to provide the necessary protection for our built and natural heritage.

Phil was receptive to what we had to say, and we left him with a three-page document which summarises our concerns.



Do you love Facebook?

CTA is looking to start a Facebook page in order to engage on a more regular and interactive basis with a wider cross-section of the community. We would also like to be able to take advantage of this medium to raise issues and support campaigns of a heritage nature.

Are you the sort of person who could put up Facebook posts on heritage matters to keep the membership updated on various issues?

If you would be interested in finding out more about helping in this way, please send an email to cta@civictrustauckland.org.nz

Ihumātao

SOUL are a community group working to save the historically, culturally and geologically significant parcel of land adjacent to the Otuatāua Stonefields at Ihumātao, Māngere from being destroyed by a housing development. Civic Trust Auckland is amongst the many groups and individuals who support their campaign.

Two events are being held by SOUL:

Te Ihu o Mataoho: an art exhibition
Gallery One, St Paul St Gallery, 40 St Paul St
Central Auckland
Tues-Fri 10-5pm and Saturday 12-4pm.

Te Ihu o Mataoho focuses on the Ihumātao peninsula, which encompasses the volcanic features Maungataketake, Otuatāua, Waitomokia, and, most importantly, Puketāpapa. Artist Rebecca Hobbs is working with SOUL, mana whenua, local residents, artists and others to respond to the area's historic and contemporary geological, volcanic, social and cultural narratives.



Photo courtesy of artsdiary.co.nz

Experience Ihumātao: guided field trip

Saturday 11 June

This trip will explore shifting boundaries between geology, archaeology, and cultural landscapes on the Ihumātao Peninsula.

8:30 - 10:00 am: Maungataketake tuff outcrops and fossil forest.

10:15 - 11:00am: Māngere Lagoon explosion crater, tuff ring and lava flows.

11:00 am - 1:00 pm: Māngere Mountain Education Centre, and Māngere Mountain.

1:15 pm - 3:00 pm: Otuatāua Stonefields Historic Reserve

Hosted by: Bruce Hayward, geologist, author
Dave Veart, archaeologist, author, and historian
No cost, any koha appreciated

<https://www.facebook.com/events/1753709734864340/>

CTA and Christchurch Civic Trust Support Each Other

Last month CTA Board member Helen Geary met with Christchurch Civic Trust members in Christchurch to further our common interests. It was a superb calm sunny day, showing off the autumnal colours of Christchurch. Trust members Ian and Lynne Lochhead took Helen on a comprehensive walking tour of the CBD, outlining the fate of missing buildings, the planned restorations and discussing the new buildings.

She then met several of the committee at an iconic heritage building, the C1 Espresso Bar, housed in a former post office. It has survived all the quakes intact (a tribute to good public works standards), but is surrounded by the devastation of the CBD: empty lots, facades propped up, containers in front of derelict buildings and new builds.

The last five years has seen the CCT campaigning on multiple fronts, fighting for retention of buildings and restorations, and bearing witness to the 235 listed heritage building that were demolished (many unnecessarily), along with hundreds of others. Two important issues right now are the future of the Christchurch Cathedral and to ensure the retention of protection over Hagley Park.

Both Auckland and Christchurch are going through similar major planning processes – the Unitary Plan in Auckland and the District Plan in Christchurch – under government-appointed hearings panels, separate from the usual planning processes. These panels do not allow appeals to the Environment Court, as is usual when developing council plans.

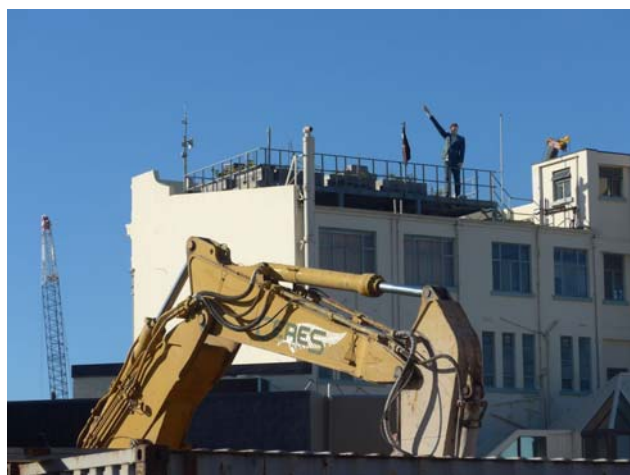
CTA has supported various campaigns run by CCT, including petitions to parliament and donations to meet costs in submitting on heritage and trees to the new district plan hearings.

Common issues were discussed, such as how to increase our memberships and attract the younger generation of heritage enthusiasts.

It was agreed that the various Civic Trusts should endeavour to meet every two years, to further co-operation and common interests, and to support each other's submissions to government legislations, such as the present RMA bill before parliament. It was suggested to put together a national plan for dealing with heritage in a natural disaster – many of the hasty demolitions in Christchurch could have been avoided if there had been a national protocol available.

The CCT celebrates its 50th birthday this month and marked it with celebrations and the release of the 2nd edition of its book "Civic Pride Civic Trust -1965-2015".

Civic Trust Auckland will also be reaching the 50th milestone in a few years, in 2018.



CCT Board members I-r: Lindsay Carswell, Tim Hogan, Ross Gray, Anne Dingwall, Penny Orme, & Chris Kissling



Puhinui Stream Cleanup

Sean's group - photo by Sean Toland



On 1 May nearly 2,000 volunteers cleaned up Puhinui Stream in Manurewa/Manukau, among them two CTA members, Oliver Hoffman and Sean Toland. Sean writes about the experience.

Registration for the event started at 8am at Auckland Botanic Gardens. There was much standing around by people of all ages, shapes, sizes, abilities and disabilities, from all over Auckland, out for a lark in the park. Next on the agenda was a Maori blessing and then a photo opportunity. Eventually, working groups of 20 were placed in buses (thanks to Murphys) and dropped off at pre-set areas along the Puhinui Stream and Otara River, down to the coast

Prior to starting work we all had a cupcake and an apple and then we got going, armed with rubber gloves and bin bags, blue for recyclables and black for rubbish. The first bits of rubbish picked out of the stream were baby wipes. I was trying not to think too hard about what they contained. People spread out across the park and soon we were being amply rewarded with rubbish of all kinds. Further up stream a culvert emptied its contents into the stream: an ooze of what appeared to be an entanglement of baby wipes and other organic detritus. Most of us stayed clear of that but one enterprising chap made a fist of it, but was soon quickly deterred by the glop.

There was a lot of rubbish that had been chopped up by grass cutters. This plastic in the grass could be a separate cleanup altogether and was quite nit picky. We picked out what we could. Around the edge of the park rubbish also gathered and proved a fruitful hunting ground for the intrepid rubbish collectors of the Puhinui Stream. Plasticplasticplastic. Everywhere.

A buzz of activity. A lady was in the stream up to her thighs attempting to remove a blockage of rubbish amongst the shrubbery. Eventually the rubbish proved to be intractable and she clambered out, a little more fragrant than before.

Another chap was wrestling with a shopping trolley; it was also entangled in the morass. A rope was recruited and big burly men were mustered. A

heave ho, and the trolley was won up the embankment, with accoutrements of slime and vegetation and god knows what else.

Festering packs of rotten meat in the bushes. A foul stench of rotten fat prevented us all from gathering this up. We left it there; we were volunteers and not superheroes, after all. A pit stop for cup cakes and apples soon afterwards. I, however, declined to eat, the various images of the day playing on my mind. Fortified again, our team ploughed on, this time through the bushes.

A discarded paddling pool was our next prize amongst the general rubbish and detritus of the morning. We filled the pool with our full bin bags and tied it into a neat bundle and placed it atop the shopping trolley which ran surprisingly well after its lonely existence in the stream, with only fetid water and rancid ecology for company. We were like a procession from the apocalypse along the backblocks of the Puhinui Stream, pushing our cargo to its heavenly resting place.

It was hot work, and a beautiful morning in the park and everyone was enjoying themselves despite what we were doing and seeing. It was interesting to see other people's interpretation of what rubbish was, how much or how little effort they were willing to put into the process, and whether they were willing to pick the small stuff or go for the big rewarding pieces of rubbish.

In the end, like the normal human being that I am, I got bored. Luckily we were almost at the end of our picking patch. Our group had been picking up rubbish for over 2hrs along a 3km stretch of the stream and we had amassed an impressive amount. We pushed our produce to the pickup point on Orams Road and then walked back to the Botanic Gardens, along the stream, for some promised burgers and entertainment. Our work was done for the day, but not complete, as the stream was still in pretty bad shape with all sorts of stuff clearly visible on the stream bed under the Southern Motorway. We didn't stop to pick any of it out. Maybe you will, one day?

Overall, the day was a great success, with more than 1,900 volunteers picking up 9 tonnes of rubbish, including 300 tyres and 200 shopping trolleys in less than 2.5 hrs. Well done to the Manukau Beautification Charitable Trust for organizing the event so capably. May it be the first of many.



Baby wipes etc. ... - photo by Sean Toland

Queen Elizabeth Square

CTA has joined the Auckland Architectural Association's appeal against Plan Change 79, along with several other community groups, to try to retain as much of the public space as possible in Queen Elizabeth Square. As an s274 party, CTA's focus is on views of the heritage buildings from the square, particularly of the former Chief Post Office and the Ferry Building. We are also concerned about the wind and shading effects of Precinct Properties' proposed development and the scale of the proposed laneway.



A view of QE Square in the days of the tram - photographer unknown

Kaiserbahnhof in Halbe, Germany

Peter Macky (former CTA Board member) reports that after ten months of painstaking work, other than the flooring and lighting, the principal rooms in his train station have now been restored (photo below).



Support Environment and Conservation Organisations of NZ - order your 2016-2017 Entertainment Membership now! 20% of every Entertainment Book sold contributes to ECO's fundraising. The book contains thousands of valuable up to 50% off and 2-for-1 offers for many of the best restaurants, cafés, arts, attractions, hotels, travel, shopping and more. Memberships sell for \$65 and you can receive over \$20,000 in valuable offers valid until 1 June, 2017.

Further info: eco@eco.org.nz

Subscriptions

If you would like to join Civic Trust Auckland please supply the following information to cta@civictrustauckland.org.nz

Name:

Address:

Email:

Phone:

Interests:

Qualifications:

Either post a cheque to:

Civic Trust Auckland, PO Box 74049
Greenlane, Auckland 1543 or transfer to the
Trust's account: 389010 0336852 00, including
your name in the reference field.

Membership categories are: Individual (\$30) /
Family (\$45) / Student/Senior (\$15)

*CTA newsletters from 2010 onwards are
available at www.civictrustauckland.org.nz*