



## NEWSLETTER NO. 2, August 2015

Civic Trust Auckland

P O Box 74 049 Greenlane 1546

[cta@civictrustauckland.org.nz](mailto:cta@civictrustauckland.org.nz)

[www.civictrustauckland.org.nz](http://www.civictrustauckland.org.nz)

Patron: Hamish Keith



*This is the second newsletter for 2015 and has been created by Audrey.*

### Winter Lectures

It was a brilliantly sunny day on 12 July and the roof terrace of Lopdell House was just the place to admire a perfect view across the Manukau Harbour. CTA members had made the trek out to Titirangi to hear Board member Julian Mitchell describe the work involved in his firm's restoration of Lopdell House and the creation of the Te Uru Gallery, the latter project for which Mitchell and Stout has been nominated for the World Architecture Festival awards in the cultural award category.

After Julian's presentation, attendees gathered in the Deco Café for coffee.



photo - Helen Geary's camera

Enjoying the view from the roof

Our next winter lecture should prove an equally interesting talk. Rosy and Oscar of Hum Salon, at the eastern end of Grafton Bridge, will be telling us about the restoration of this last of the grand residential villas that once lined Grafton Rd.

We look forward to seeing you there on **Sunday 6 September** 3pm - 5pm.

*Gary Russell's resignation from the Board was received on 31 March this year. Gary first served as CTA secretary and latterly as a Board member. The Board appreciates his ongoing support as well as his attendance at events, most recently the 12 July Winter Lecture.*

#### Board Members 2015

Allan Matson (president)

Audrey van Ryn  
(vice-president & secretary)

Julian Mitchell (treasurer)

Margaret Barriball

Helen Geary

Munroe Graham

Jim Mason

### Civic Trust Auckland Website

The new-look website has been live for some time and those of you who have visited it may recognise the image at the top of the page as the site's new masthead photo. Helen has been putting up regular posts on the site and asks that if anyone comes across a news item that they think might be of interest, to send it to her. Please do visit the site regularly. There are usually weekly posts of heritage news.

Many thanks to Helen for her ongoing work on the website.

[heleng@maxnet.co.nz](mailto:heleng@maxnet.co.nz)

## Wharf Protests & Court Victory



CTA's support for the protests against Ports of Auckland's plan to extend Bledisloe Wharf has included members signing the petition, attending meetings, participating in rallies on Queen's Wharf and joining in a 1500-strong march on 3 May down Quay St to end up at Queen's Wharf. We also gave a sizeable donation to Urban Auckland towards the costs of their two-day hearing challenging POAL and Auckland Council.

Justice Venning ruled on 19 June that POAL's resource consents were invalid because the public had not been notified. We share Urban Auckland's delight and relief with regard to this decision.



photo - Helen Geary



photo - Allan Matson

## St David's Church



CTA has also given support in a number of ways to the campaign to save St David's Church. Both an opening and a closing event were held: on 24 April to mark the installation of the 6,800 quatrefoils on the church, and three months later when the art work was due to be taken down. In between, CTA members attended an afternoon function to thank volunteers who helped with the project, and several members also went on "tent duty" outside the church to inform visitors about the Art of Remembrance and take orders for the individual pieces.

The Art of Remembrance by Max Gimblett serves both as a memorial to World War One soldiers and as a means to raise money for the restoration of the church.



Photos - Gloria Jenkins, 24 April, Freestyle Event Photography



Audrey van Ryn & Hazel Lamb, 2 May, Helen Geary

St David's, 24 April - photo Freestyle Event Photography



## Auckland Heritage Festival



Auckland Council's heritage festival commences on 26 September and CTA is running an event twice: on 3 and 8 October, both at 12.30pm, "A Beginner's Guide to Understanding Our Places". This will be a seminar by John Adam, landscape historian and CTA member, who will be sharing his knowledge of how to undertake historical research.

John's presentation will be preceded by a short presentation of some of Mark Bishop's "historic merge" photos, two of which are below.

More details will be in the festival programme and also in an email closer to the date.



Queen & Wellesley St BW merge, Feb 1903 (1-W1051)



Lower Queen St 1898 (4-1399)

## The Hanna Block - King's School

The Board decided to give its support to efforts by the old boys of King's School in Remuera to save this school building. The petition, started by Rob Thomas, has 927 signatures at the time of writing. The Sunday Star Times on 16 August published an article on the matter, and CTA's support was mentioned, along with a phrase from our comment on the petition, which has maintained its "most popular" position for a month and reads in part as follows:

*"It should not be necessary to campaign to save such a building as the Hanna Block but sadly it is, and we commend those who are putting in the huge effort we know is unfortunately required on an ongoing basis for our city's heritage to be properly recognised and protected. The Hanna Block deserves to be included on Auckland Council's schedule of significant historic heritage for a number of reasons, not the least of which is that its architect, Daniel B. Patterson, was responsible for the design of a number of other significant buildings in Auckland ..."*

*"We all share the dismay when yet another part of the city is threatened with demolition, particularly when it is a landmark building. The city has lost so much, and many of the decisions that led to these losses and the people who made them have suffered much blame in the retrospective scrutiny ..."*

*"We would encourage those making the decision to revisit it and explore whether they can meet their needs without destroying their heritage."*

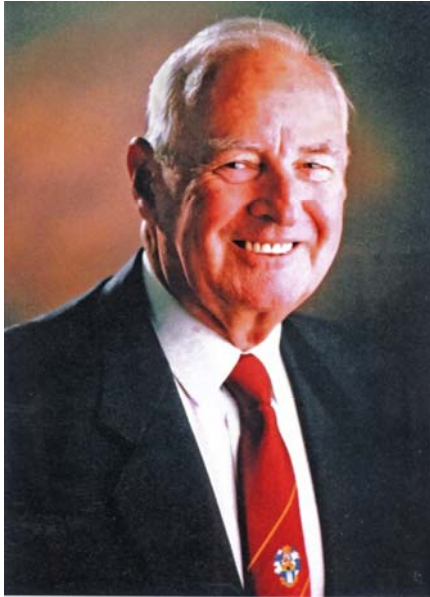


Hanna Block - George Grey Collection, Auckland Library



The proposed Centennial Building

## Bryan Allen Bartley 1928 - 2015



Bryan Bartley, ONZM (Officer NZ Order of Merit), BE (Civil), Distinguished Fellow IPENZ, Fellow Australian Institute of Mining and Metallurgy, and Honorary Fellow Institute of Quarrying (UK), died in Auckland on 24 March. He was farewelled at a funeral service on 30 March by large number of people from all walks of life, including those from the many professional and community organisations in which Bryan had played significant roles.

After completing his engineering degree at Auckland University in 1950, Bryan worked for Auckland City Council. Two years later he joined Winstone Ltd, working in their quarries section. In 1961 he decided to go to Malaysia where he managed the Gammon Malaysia Ltd quarry for building the Kuala Lumpur Airport. In 1963 he returned to Winstone Ltd where he was the Quarries Engineer responsible for the seven quarries owned by the company. Bryan continued at Winstones, retiring in 1985 after 22 years' service as General Manager, Winstone Central Engineering Services.

During his time at Winstones, Bryan had met Wellington City Council City Engineer, Jim MacDonald, who had invented a rock crushing machine. Bryan persuaded Winstones to build one, and together with Jim, he significantly improved the design. After Winstones decided not to continue with the development, Bryan and Jim patented their BARMAC rock crushing machine which crushed rock against rock, producing a range of rock sizes including regular shaped sealing chips for roading. BARMAC machines are now used worldwide with 4,500 crushers bearing the BARMAC brand, along with another 1,200 copy machines.

Bryan and Jim won the UDC Inventors award for the BARMAC machine in 1979. Bryan was Chairman and founding member of the UK-based Institute of Quarrying in New Zealand and in 1989 he became the first International President of this institute.

Bryan was also a keen yachtsman, and with John Blundell he developed and patented the Kiwiprop self-feathering propeller for racing and cruising yachts. Their propeller sells around the world, and by 2010, 750 propellers a year were being manufactured.

Bryan served the Institution of Professional Engineers (IPENZ), first on the Auckland Branch Committee, becoming Branch Chairman in 1977, and in 1980 serving as Chair of the very successful IPENZ Conference. As an elected IPENZ Council Member, he was the Vice President for Professional Practice from 1982 to 1984 when he was responsible for the overhaul of disciplinary procedures. While a member of the IPENZ Council, he was appointed to the Council of Unitec Institute of Technology, becoming Chairman from 1990 to 1997, a period of significant growth in student and academic numbers.

Bryan was a long-serving member of Civic Trust Auckland and President from 1980 to 1984. In recognition of his long service he was elected a life member. Other boards on which Bryan served were: the Auckland Electric Power Board, Auckland Heritage Trust, the Association of Polytechnics, the Building Research Association and the IPENZ Heritage Engineering Auckland Chapter. Here Bryan played a significant part in the writing of "Evolving Auckland – the City's Engineering Heritage", a 335-page book published in 2011. Bryan was also involved in the Inventors Club and the Mt Eden Probus Club.

Bryan was made an Officer of the New Zealand Order of Merit in 2000 and awarded a Distinguished Fellowship of IPENZ in 2006. Bryan has achieved significant progress for many organisations, all with his characteristic quiet and unassuming modesty. With his charming wife Elaine, he has made a huge contribution to the progress of our society and will be greatly missed.

*Prepared by John La Roche April 2015  
Reference Oral Interview by John Fitzmaurice  
November 2010*



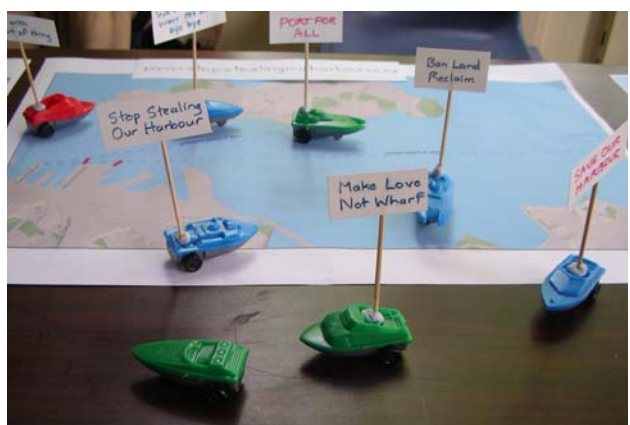
## Neighbours Day



For this annual celebration, this year held on Saturday 28 March, the Pioneer Women's Hall Working Group invited CTA to take part in an event at the hall where various organizations that provide an activity or service to central city residents were able to showcase themselves.

CTA was alongside such groups as the CBD Residents' Advisory Group, Friends of Symonds St Cemetery, the Auckland Regional Migrant Service, the Auckland Community Law Centre and Gardens4Health, amongst others.

It was lovely to have several CTA members call by and also to meet a number of CBD residents, some of whom participated in our activities of rebuilding the Christchurch Cathedral and making a guess as to what the object under scrutiny below is. Two people guessed correctly that it is a wooden cobblestone - this one having once been part of the street in K' Rd.



## What else have members been up to?

What else have our members been doing lately in the areas of heritage and the environment?

Various members have written letters to the Herald, signed petitions, attended Local Board meetings, been to a number of Auckland Conversations, provided support for various other environmental and heritage groups, taken part in a Council workshop with a visiting heritage expert, made suggestions to the Board about campaigns and projects, and attended Unitary Plan mediations and hearings.

Thank you to those who signed the "Save our Unique Landscape" petition. Some members are attending the meeting this week on this matter.

Your Board has recently made submissions on:

- Heritage NZ's Draft Statutory Policies
- The Integrated Management Plan for the maunga
- Queen Elizabeth Square (Plan Change 79)
- Auckland Regional Public Transport Plan Variation

Roy Clements had a spot on TV on the Good Sorts programme:

<https://www.tvnz.co.nz/one-news/new-zealand/goodsort-roy-clements-transforms-untamed-bush-into-beautiful-gardens-6314383.html>

Oliver Hoffmann was on radio about his efforts to rid Auckland of the moth plant:

<http://beatidykiwi.co.nz/2015/06/hunting-the-moth-plant-solo/>

We have new members to welcome, some of whom joined up after Donovan Rypkema's Auckland Conversation in March.

## What else is coming up?

CTA will again have a stall at the Grey Lynn Park Festival, on Saturday 28 November.

We are continuing to attend mediation and hearings relevant to our Unitary Plan submissions.

Keep an eye on the CTA website for news and notices: <http://civictrustauckland.org.nz/>

### Subscriptions

If you would like to join Civic Trust Auckland please supply the following information to [cta@civictrustauckland.org.nz](mailto:cta@civictrustauckland.org.nz)

Name:

Address:

Email:

Phone:

Interests:

Qualifications:

Either post a cheque to:

Civic Trust Auckland, PO Box 74049 Greenlane, Auckland 1543 or transfer to the Trust's account: 389010 0336852 00, including your name in the reference field.

Membership categories are: Individual (\$30) / Family (\$45) / Student/Senior (\$15)

*CTA newsletters from 2010 onwards are available at [www.civictrustauckland.org.nz](http://www.civictrustauckland.org.nz)*



Moth plant - image <http://blog.landscapedesign.co.nz/>

