



NEWSLETTER NO. 2 SEPTEMBER 2017

Civic Trust Auckland

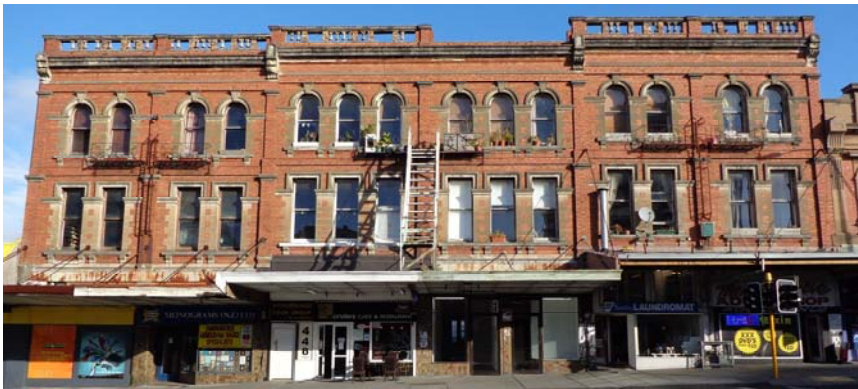
P O Box 74 049 Greenlane 1546

cta@civictrustauckland.org.nz

www.civictrustauckland.org.nz

Patron: Hamish Keith

This is the second newsletter for 2017 and has been compiled by Audrey. For up-to-date news about CTA activities and the wider world of heritage, make regular visits to our website at <http://civictrustauckland.org.nz/>



Board Members 2017

Allan Matson (president)

Audrey van Ryn

(vice-president & secretary)

Julian Mitchell (treasurer)

Margaret Barriball

Helen Geary

Munroe Graham

Bill Rayner

Heritage Debate: Tuesday 3 October 6pm - 8pm, Ellen Melville Centre, Freyberg Square

This is Civic Trust Auckland's main event in this year's Auckland Heritage Festival and it will be held in the newly reopened Ellen Melville Centre, previously the Pioneer Women's and Ellen Melville Hall. A panel will engage in the ongoing topic of debate: "There is adequate protection for built heritage."

At the time of writing, panel participants are: Noel Reardon, Heritage Manager for Auckland Council; Sally Hughes, spokesperson for the Character Coalition; Allan Matson, President of CTA; John Radford, Auckland artist; Sandra Coney, member of the Waitākere Ranges Local Board and Rebecca Vertongen, planner for Heritage New Zealand, Pouhere Taonga.

The MC will be Hamish Keith, our patron. Time is allocated for members of the audience to have their say and pose their questions. We hope to see many of you there!

<http://www.heritagefestival.co.nz/>



Winter Lectures

This year we were lucky enough to hold three winter lectures, with visits to the Selwyn Court and Library, Parnell on 2 July, Donner House, Titirangi on 30 July and Huntly House, Grafton on 27 August. Our thanks go to all our generous hosts and speakers, and also to Board member Margaret for her organisation of these events. Photos are by Board members Helen and Allan.

Selwyn Court and Library



Ross Bay, the Bishop of Auckland, kindly showed us around his residence.



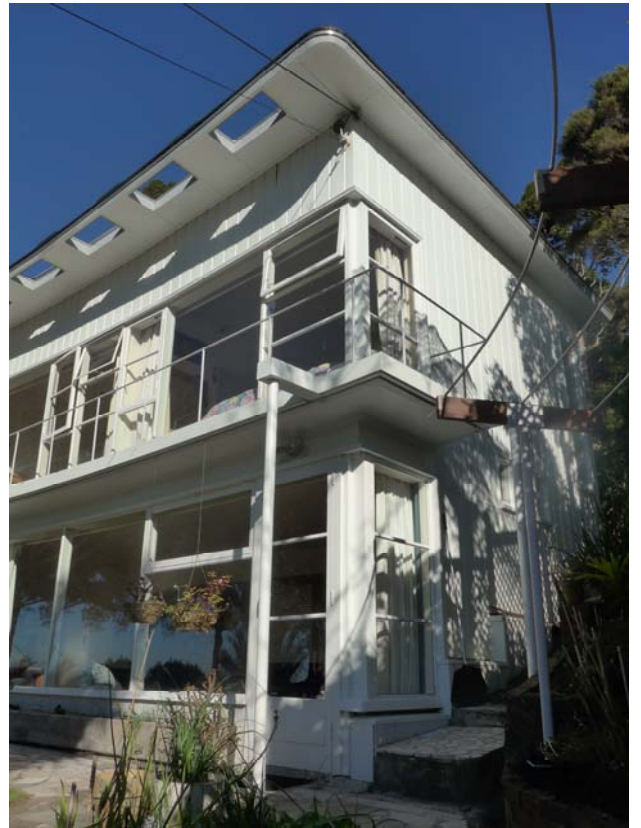
Warren Limbrick shared his knowledge about the Selwyn buildings.



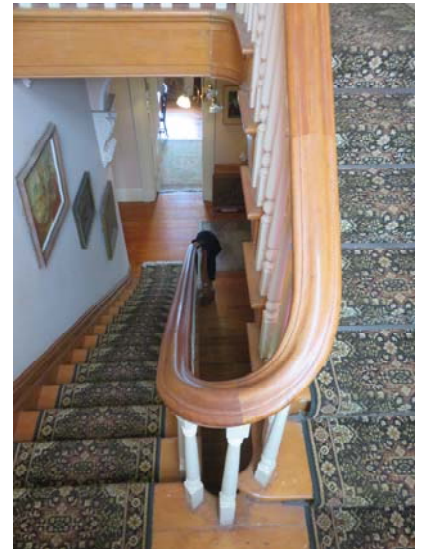
House of Tibor Donner, Auckland City Architect



Paul Jenkin, owner of Donner House and our host for the afternoon



Huntly House, 16 Huntly Ave, Grafton





Mountain Fountain to Mountain Top

Saturday 7 October

Friends of Maungawhau are hosting a guided walk from Parnell's Holy Trinity Cathedral to the summit of Maungawhau and Mt Eden Village.

Meet at Mountain Fountain in the cathedral forecourt at 10:30am.

Discover walks and waterways, reserves and rock gardens. Find out how the city has developed, and look at issues related to intensification and the protection of green space in Auckland.

You can choose to do the whole walk, which is about four hours, or join part way - if the latter, please contact April (see below). Bring water and lunch to eat in the grounds of Highwic House. In the afternoon visit Withiel Thomas Reserve and the grounds of Government House.

Reasonable fitness and sturdy footwear are recommended.

The Outer Link bus connects the start/end points and midway locations.

Bookings preferred: Contact April Glenday
027 217 3540 / 09 631 0057.

Mountain Fountain



Walk the Portages

Walk the Portage - South

Sunday 8 October, 10.30am

Meet Seaside Park, Brady Rd, Ōtāhuhu

We will walk the Ōtāhuhu portage from the Pacific Ocean to the Tasman Sea. The walk will take about two hours one way, with extra time if you choose to climb Mt Richmond. The walk goes as close to the sea as possible, i.e. as far as the now closed Westfield Railway Station.

During a traditional portage you would be carrying or rolling a boat or canoe, so you are encouraged to carry a boat of your own - maybe a boat hat or small model boat.



Josca Craig-Smith

Walk the Portage - West

Sunday 15 October, 10.30am

Meet Karaka Park, Green Bay, Portage Road, New Lynn

We will walk the New Lynn portage from the Pacific Ocean to the Tasman Sea. This walk is also about two hours one way. For each walk, you may decide to walk both there and back. This walk goes to Ken Maunder Park.

These two events are a collaboration between Civic Trust Auckland and Walk Auckland.

CleanUp AKL Facebook Community Group Set Up

A new community initiative on Facebook has been set up in Auckland to combat litter issues in the city and suburbs. CleanUp AKL was set up in March 2017 when its founders got tired of seeing a deterioration in standards around the city related to littering issues and the city's general grubby appearance. Standards had appeared to drop in recent years and it was time to halt the slide. Some had suggested that standards had significantly slipped since the inauguration of the Super City.

The idea germinated over a couple of years where in the first year the issue was noted but nothing was done except for mostly getting annoyed. One of the main issues was the number of water leaks apparent around the city with water going to waste down the drains. This led to a regular water leak report to Watercare and monitoring their progress on repairs, and reporting back to them when the leak was repaired or if the repair work needed a little more "workmanship." Other issues included reporting road signage issues to Auckland Transport, or illegal dumping to Auckland Council. However, the major problem of littering remained.

Eventually annoyance gave way to the direct action of adopting a street for a weekly litter pick-up. This resulted in the development of the CleanUp AKL Facebook community page to post results on how much litter was picked up from one street in one hour each week.

CleanUp AKL has a number of aims, including reporting on water leaks, graffiti, illegal dumping and fallen branches. However its main aim is to reduce litter from washing down drains and flowing to the sea to add to the burgeoning oceanic garbage issue, epitomised and inspired by the signage at many drainage grates in the city - Dump no Waste, Flows to Sea (pictured below).

In these situations, it's very easy to get grumpy and irascible with human behaviour and become rather unreasonable in the process, (see Victor Meldrew); however, CleanUp AKL's preferred operating strategy is to treat the littering issue with good humour and encouragement, and not adopt a fatalistic attitude.

The community members believe that everyone has a part to play in reducing waste flowing to sea and this can be achieved in the community's catchphrase: "Adopt a Street - for one hour a week. Pick up litter, at your feet." Any ranting and raving on the Facebook page is kept to a minimum and a regular dose of sometimes surrealist humour is inserted into posts, and healthy debate on the issue is encouraged.

So far there has been good uptake on the street adoption idea and it has even gone beyond the bounds of Auckland City.

- Sean Toland, CTA member



For more information please check out the CleanUp AKL community page on Facebook, tell your friends about it and join the fun! <https://www.facebook.com/CleanUp-AKL-199372683901112/>

Climate Change

From a recent ECO newsletter

Project Drawdown is facilitating a coalition of researchers, scientists, graduate students, PhDs, post-docs, policy makers, business leaders and activists to assemble and present the best available information on climate solutions in order to describe their beneficial financial, social and environmental impact over the next 30 years.

To date, the full range and impact of climate solutions have not been explained in a way that bridges the divide between urgency and agency. Thus the aspirations of people who want to enact meaningful solutions remain largely untapped.

<http://www.drawdown.org/>

photo - Hugh Sitton



Ban the Bag

Thank you to those of you who recently signed the petition to ban single-use plastic bags. Greenpeace reported a couple of weeks ago that the petition had been signed by 30,000 people. The aim is a total ban on single-use plastic bags in order to protect precious marine life from the huge amount of plastic pollution.

Access to K'Rd CRL Station

Thank you also to those of you who, at short notice, sent in submissions and collected signatures for a petition asking for better access to the K'Rd Station in Mercury Lane. Universal access is a topic on which CTA made a strong submission in the Unitary Plan.

Save Waitākere Kauri

The Tree Council, the Waitākere Ranges Protection Society and Forest & Bird stand with Te Kawerau a Maki in calling for a rāhui and closure of the Waitākere Ranges Regional Park in response to the monitoring figures from Auckland Council's latest survey of kauri dieback.

While the average number of trees infected across the Waitākere Ranges may be 19% (more than double from five years ago), the infection in areas where kauri dominates is affecting between 33% and 58% of trees.

The infection is being spread mainly by people, as the majority of the infection is along the track network. Compliance with phytosanitary measures to scrub and spray shoes, dog feet, tyres and equipment is low and falling.

Local extinction of kauri in areas like Piha, where the infection is worst, is highly likely within five years unless an urgent programme to protect kauri is implemented. Extinction of kauri across the entire Waitākere Ranges is possible within a generation.

*CTA newsletters from 2010 onwards are available at
www.civictrustauckland.org.nz*

Subscriptions

If you would like to join Civic Trust Auckland please supply the following information to cta@civictrustauckland.org.nz

Name:

Address:

Email:

Phone:

Interests:

Qualifications:

Either post a cheque to:

Civic Trust Auckland, PO Box 74049 Greenlane, Auckland 1543 or transfer to the Trust's account: 389010 0336852 00, including your name in the reference field.

Membership categories are: Individual (\$30) / Family (\$45) / Student/Senior (\$15)